

Digital Video Otoscope/Endoscope

Universal Set

Veterinary

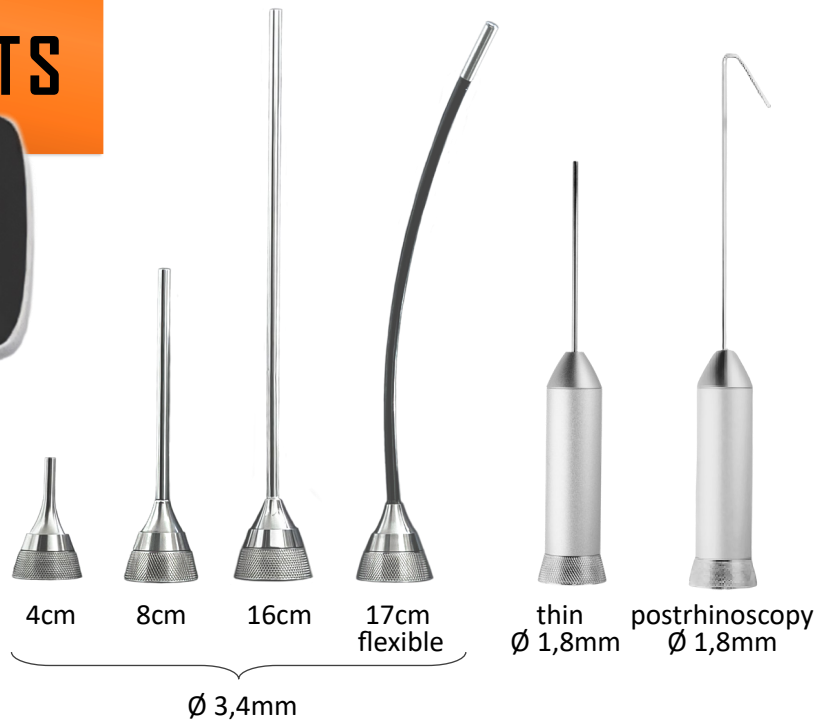


Quick guide

COMPONENTS



Digital Video Otoscope/Endoscope
incl. Charging station



Rodent spatula



Ear funnel



Adapter
Dermatology/Eye



Adapter +
Ear Funnel (large)



Power supply



USB-Cable

External work channel
(large)
with Luer connection

External work channel
(small)
with Luer connection

Flex. gripping pliers
(large)

Flex. gripping pliers
(small)

CLEANING

CLEANING OF OPTICS & ATTACHMENTS:

Use an disinfectant wipe to clean the lens and outer shell of the optics.
All other attachments and the grippers are suitable for the autoclave.

CLEANING OF MAIN UNIT:

A wipe soaked in water, alcohol or a non-staining disinfectant can be used to clean the main unit. Make sure that no liquids get into the electronic interface of the USB-C ports.

INSTRUCTIONS

ON/OFF

Press the button for 2 seconds
Wait while the device boots up



PLAY BUTTON

- Show photos and videos
- To delete recordings, press camera button once briefly

MENU

- Video mode
- Camera mode
- Gallery
- Settings
(Date, time, language,
format SD Card)

Navigate with **ARROW KEYS**
Confirm with camera button

CAMERA BUTTON

PHOTOS:

- Take a photo: 1x press briefly
- Save photo: press and hold for 3 sec
- Discard photo: 1x press briefly

VIDEOS:

- Record video: press and hold for 3 sec,
recording starts (camera symbol flashes)
press briefly once to stop recording
- Video is saved automatically

CHARGE

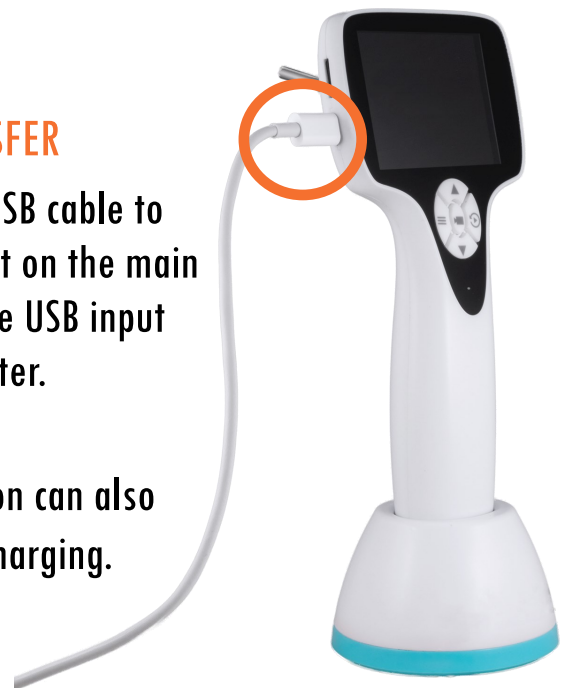
Place the device in the
Charging station. Connect
the power supply with the
USB cable and plug this in
the USB-C port on the
Charging station.



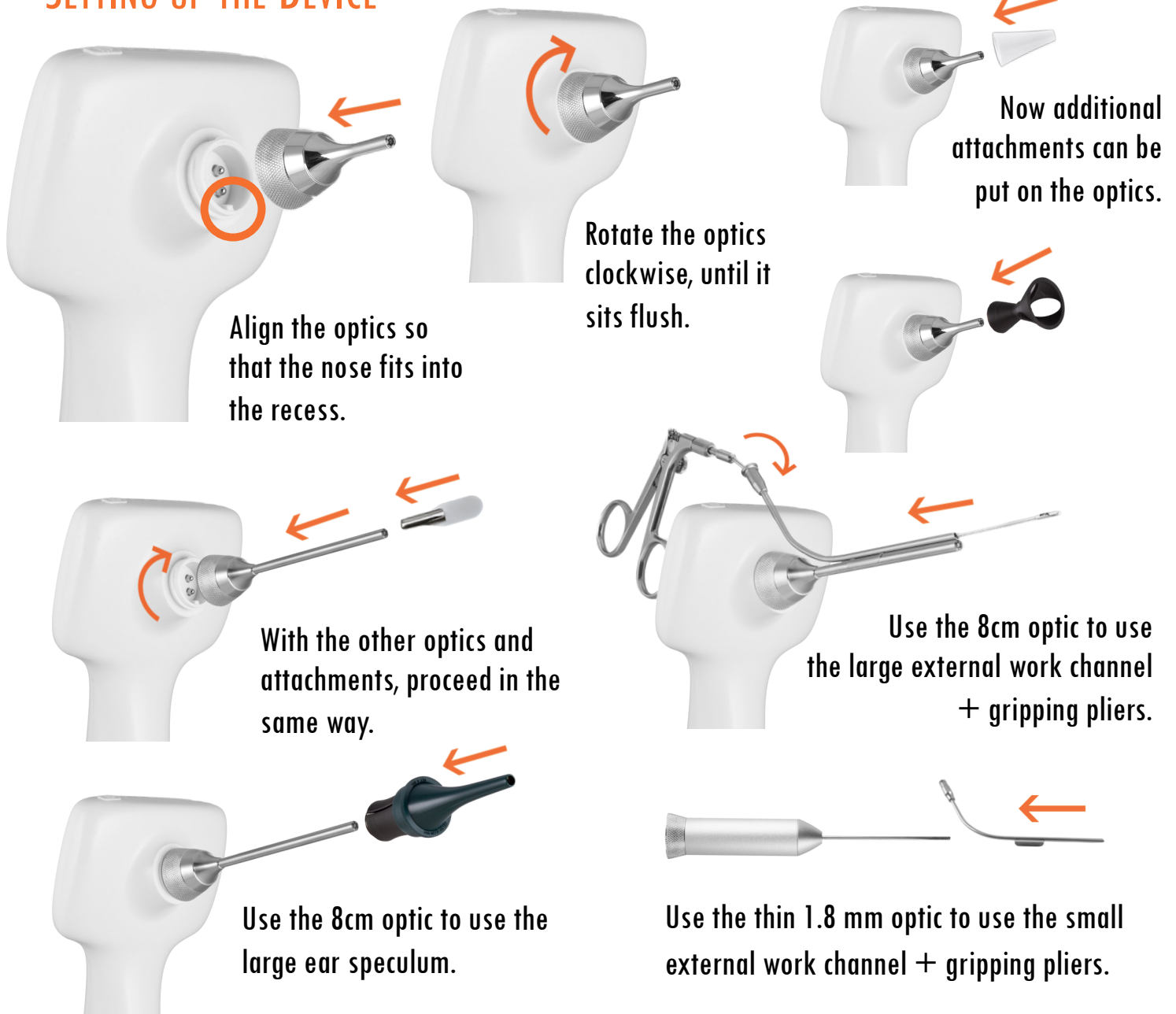
DATA TRANSFER

Connect the USB cable to
the USB-C port on the main
device and the USB input
on the computer.

This connection can also
be used for charging.



SETTING UP THE DEVICE



The device should be switched off before changing the individual optics.

⚠ IMPORTANT NOTES: READ BEFORE USE

- The device may only be used under the supervision of a medical professional.
- Do not use the device in the presence of flammable chemicals.
- Do not bring the electronic contact surfaces into contact with liquids.
- High-frequency wireless communication devices can affect the performance of the device.
- If the device is turned on for a very long time, the tip may become slightly warm. If this is uncomfortable for the patient, switch off the device briefly and do not continue the examination until it has cooled down.
- Modifications to this device are not permitted.